



## **Turf Removal Program / Drought Tolerant landscape Rebate Program**

---

Residential outdoor water use accounts for over 50% of your monthly water usage. The City of Ceres is offering rebates to customers who replace their thirsty lawns with water-efficient landscaping. The program is open to residential, commercial and municipal customers that are directly served by the City of Ceres service area. Restrictions apply, so be sure to read the Terms and Conditions, and Frequently Asked Questions (FAQ's) for more information. By beautifying your landscape through the turf removal program you will save water, energy, reduce your water bill and the time and money you spend maintaining the lawn.

### **Steps to Participate**

**Step 1:** Read the Program Terms & Conditions to fully understand the program eligibility & rules. Once you have read the terms & conditions sign the application, attach a copy of your most recent water bill, four to five current color photos of the area of turf you're planning to remove, and a sketching of your design to replace turf grass with qualifying plants and materials. Once you have gathered all the required documentation mail to the Water Conservation Program at:

City of Ceres  
Water Conservation Program  
2220 Hackett Road  
Ceres, CA 95307

**Step 2:** Once we receive your application we will call you to schedule an appointment for a **"Pre-Qualification Inspection"** site visit with a Water Conservation Program representative. Proceeding with a project prior to receiving authorization from the Water Conservation Program will make the conversion **ineligible for a rebate.**

**Step 3:** If approved, you will receive notification by phone and given a reservation number to start your project.

**Step 4:** Perform your lawn / turf replacement project within the time frame listed in terms & conditions (**45 days** from your approval date).

**Step 5:** Make an appointment for your “**Post-Installation Inspection**” within the time frame and submit all invoices and receipts used for your project to the water conservation representative; who will verify that your project was completed according to the Program’s Terms & Conditions. Upon approval, the City will mail you a rebate check. If you have questions, or need further assistances please contact our office at (209) 538-5688 Monday through Friday 8:30 am to 4:30 pm.

## **Terms and Conditions**

### **Pre-Conversion Eligibility**

- 1. Authorization to Proceed:** Before removing any turf, the following items must be submitted to the City of Ceres Water Conservation Program: (1) signed and completed application (Rebate Reservation); (2) copy of your most recent water bill; (3) four to five current color photos of each area of turf you’re planning to remove; (4) provide a sketch/drawing of plans to replace turf grass with qualifying plants/ materials; (5) agree to pre and post inspections of the proposed project area. Rebates through the Turf Removal Program are available for customers that have received an approved rebate reservation number. **Proceeding with a project prior to receiving authorization from the Water Conservation Program will make the conversion ineligible for a rebate.**
- 2. Customer Eligibility:** The property must receive water service directly from the City of Ceres. Only property owners may apply for the rebate.
- 3. Qualifying Areas:** Areas to be converted must have live turf that has been irrigated for at least a year prior to the rebate request. Conversion must comply with all applicable state and local laws, codes, ordinances, policies, covenants conditions, regulations and restrictions.
- 4. Minimum Project Size:** A minimum of 100 square feet of turf must be converted. Smaller projects with less than 100 square feet of turf may be accepted if they completely remove turf from a property.

### **Minimum Requirements for the Converted Area:**

- 1. Plant Cover:** Plants used to replace turf must be very low to moderate water use. See brochure provided with the application for a list of native and low-water plants and shrubs. For every 5’ by 5’ square there shall be one drought tolerant plant. Buffalo grass is considered a turf grass and is not eligible for this program.

2. **Efficient Irrigation:** If a water system is used, it must be a drip irrigation system equipped with a pressure regulator, filter, and emitters. The system must be free of leaks and malfunctions. Each drip emitter must be rated at less than 2 gallons per hour (gph). If part of a lawn is converted, the sprinkler system must be properly modified to provide adequate coverage to the remaining lawn without spraying the converted area.
3. **Surface Treatments:** All exposed soil must be covered with a minimum of a 2-3” layer of mulch permeable to air and water, except in areas planted with creeping or rooting groundcovers. Common mulching materials include rock, bark, pavers or un-grouted flagstone. If a weed barrier is used beneath the mulch, it must be manufactured to be permeable to air and water. **Impermeable surfaces are to be limited in your design, allowing for walk ways only. Concrete slabs, plastic sheeting or other impermeable surfaces will not be covered by the rebate. Replacing your lawn with a pool will not be eligible for a rebate.**

○ **Figure Out How Much Mulch You Will Need:** Mulch is available by the bag or in bulk. Bulk mulch is measured in cubic yards. You can calculate the volume of mulch you need by multiplying the area (in square feet) by the depth (fraction of foot, not inches), then dividing by 27. The following table will guide you:

Cubic Yards Needed for Depth of Mulch			
Square Footage	2”	3”	4”
200	1	2	2.5
500	3	5	6
1000	6	9	12
1500	9	14	19
2000	12	19	25

4. **Invasive Plants:** Are not to be used in your new landscape design. Plant species to avoid are identified on the “Don’t Plant a Pest” brochure provided with the application package or online at <http://www.cal-ipc.org/landscaping/dpp/pdf/CentValley.pdf> and <http://www.cal-ipc.org/landscaping/dpp/planttypes.php?region=centvalley>

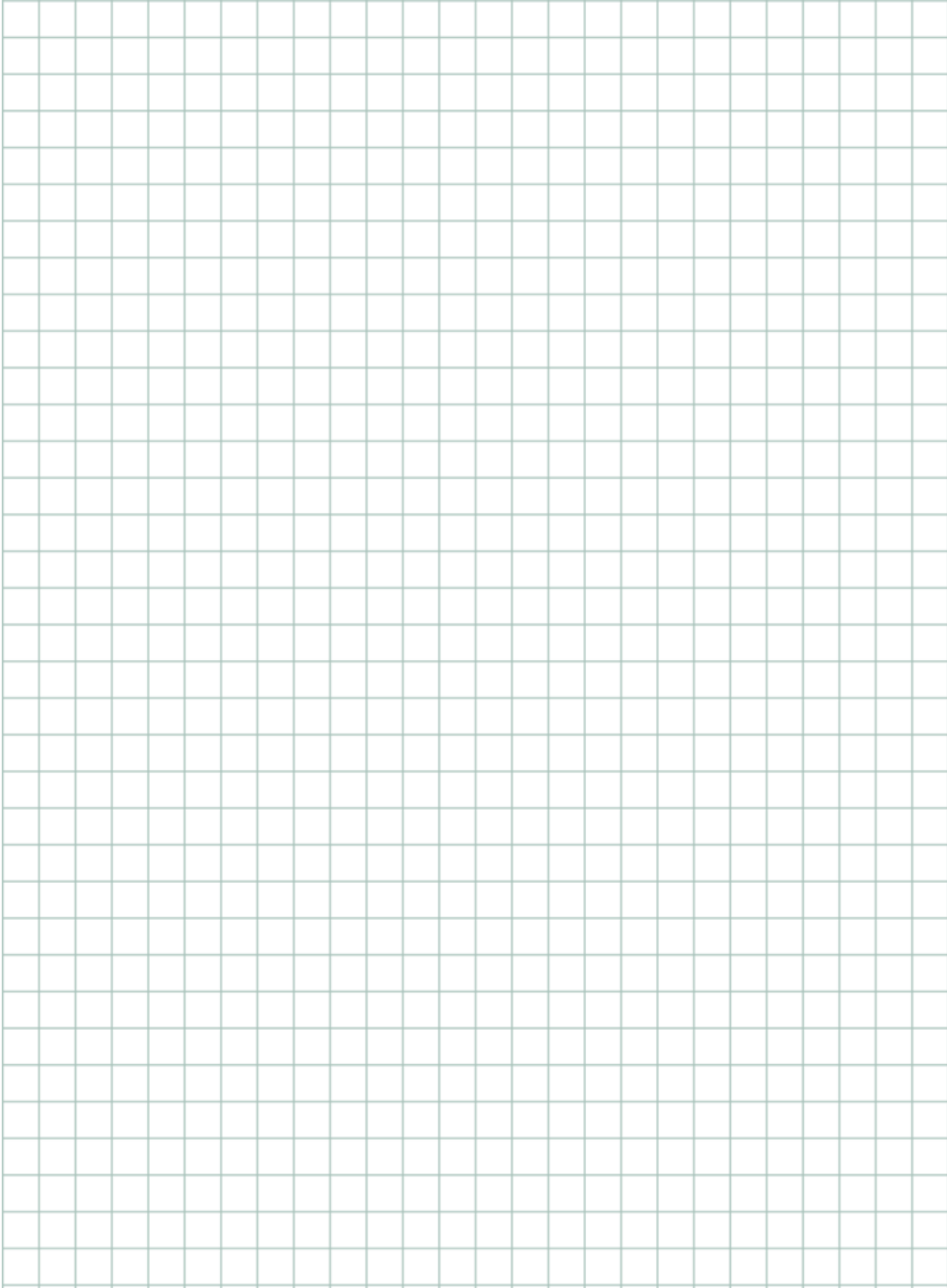
**Program Terms:**

1. **Project Timelines:** Rebate reservations are valid for 45 days from date of project approval. Projects are subject to inspection by Water Conservation staff to determine

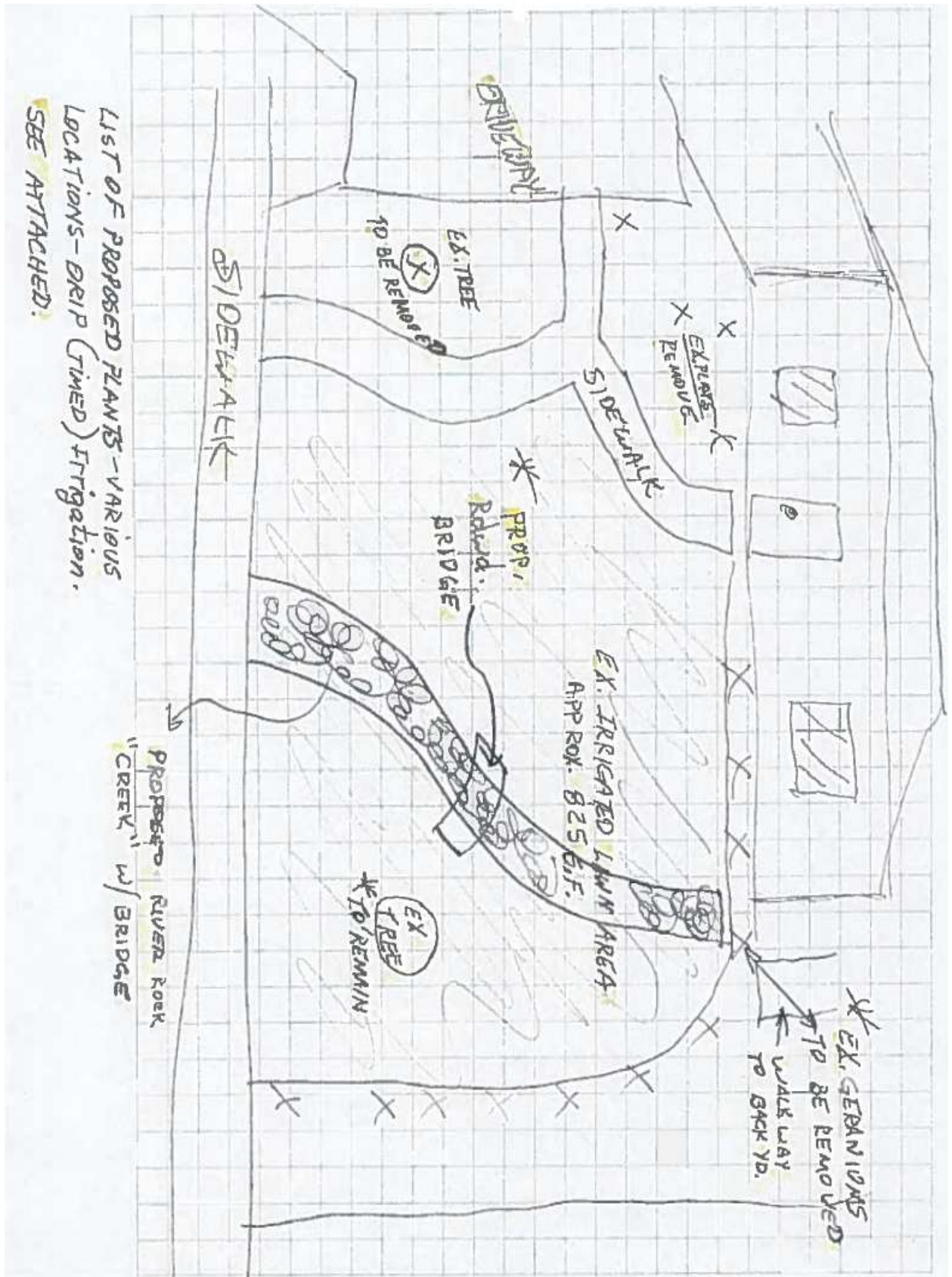
compliance. If conversion fails to meet program compliance, you will be granted an additional 15 days to attain compliance. This agreement terminates 45 days after execution or upon incentive payment, whichever comes first. All applicant obligations, including properly executed covenant documents, must be fulfilled within the 45 days period or the rebate may be forfeited. This program will end when all funds have been expended.

- 2. Incentive Amounts and Limits:** Reservations are issued on a first come, first served basis. The incentive rebate is for \$1.00 per square foot with a maximum rebate for residential accounts set at \$500 dollars and \$1,000 dollars for all other accounts. The rebate amount cannot exceed the total cost of the project.
- 3. Requirements to Sustain Conversion:** Converted areas must remain in compliance with all program conditions for a minimum of five (5) years. If this requirement is violated, you may be required to refund all or a portion of the rebate. This requirement is void upon transfer of ownership.
- 4. Other Responsibilities of the Applicant:** The City enforces only the conditions in this agreement. The applicant is responsible for the complying with all laws, bylaws, ordinances, policies codes and covenants that may apply. Quality and appearance of the conversion is the responsibility of the applicant. Rebates may be considered taxable income. The City of Ceres is not responsible for any taxes that may be imposed as a result of your receipt of any rebate.

**Below, please provide a sketch of your landscape plan (see attached samples.)**

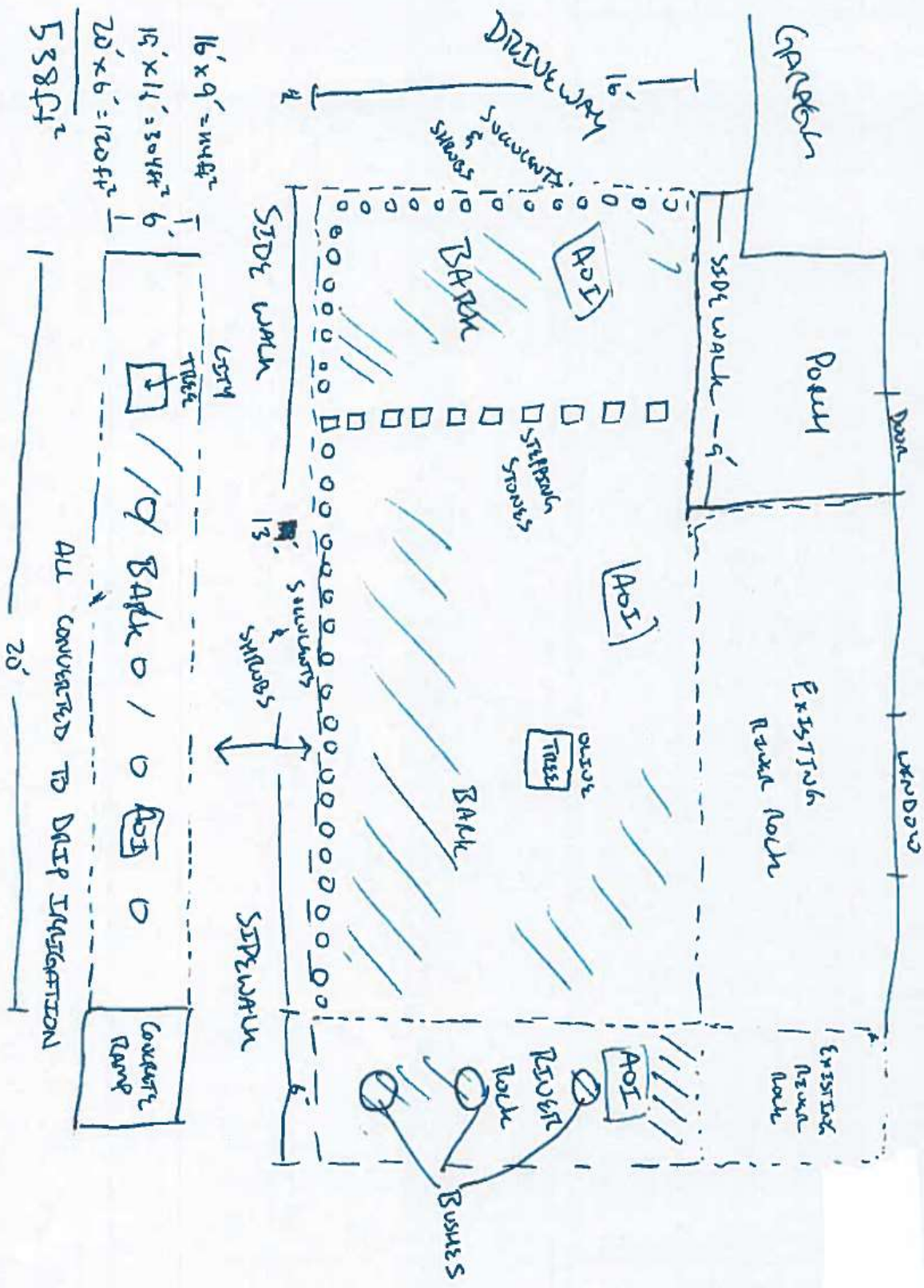


# EXAMPLE



LIST OF PROPOSED PLANTS - VARIOUS LOCATIONS - DRIP (TIMED) IRRIGATION. SEE ATTACHED.

EXAMPLE



EXAMPLE

